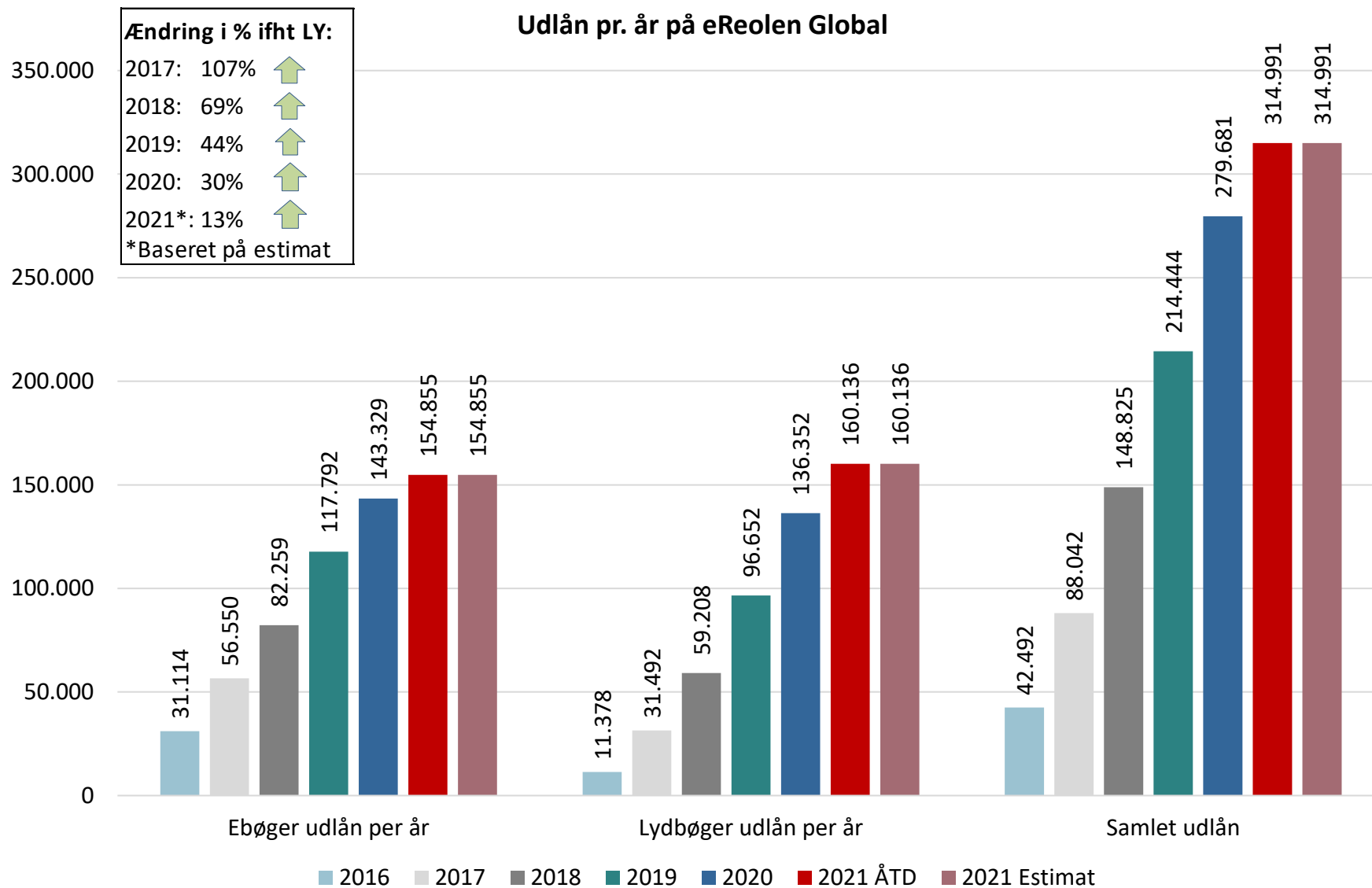


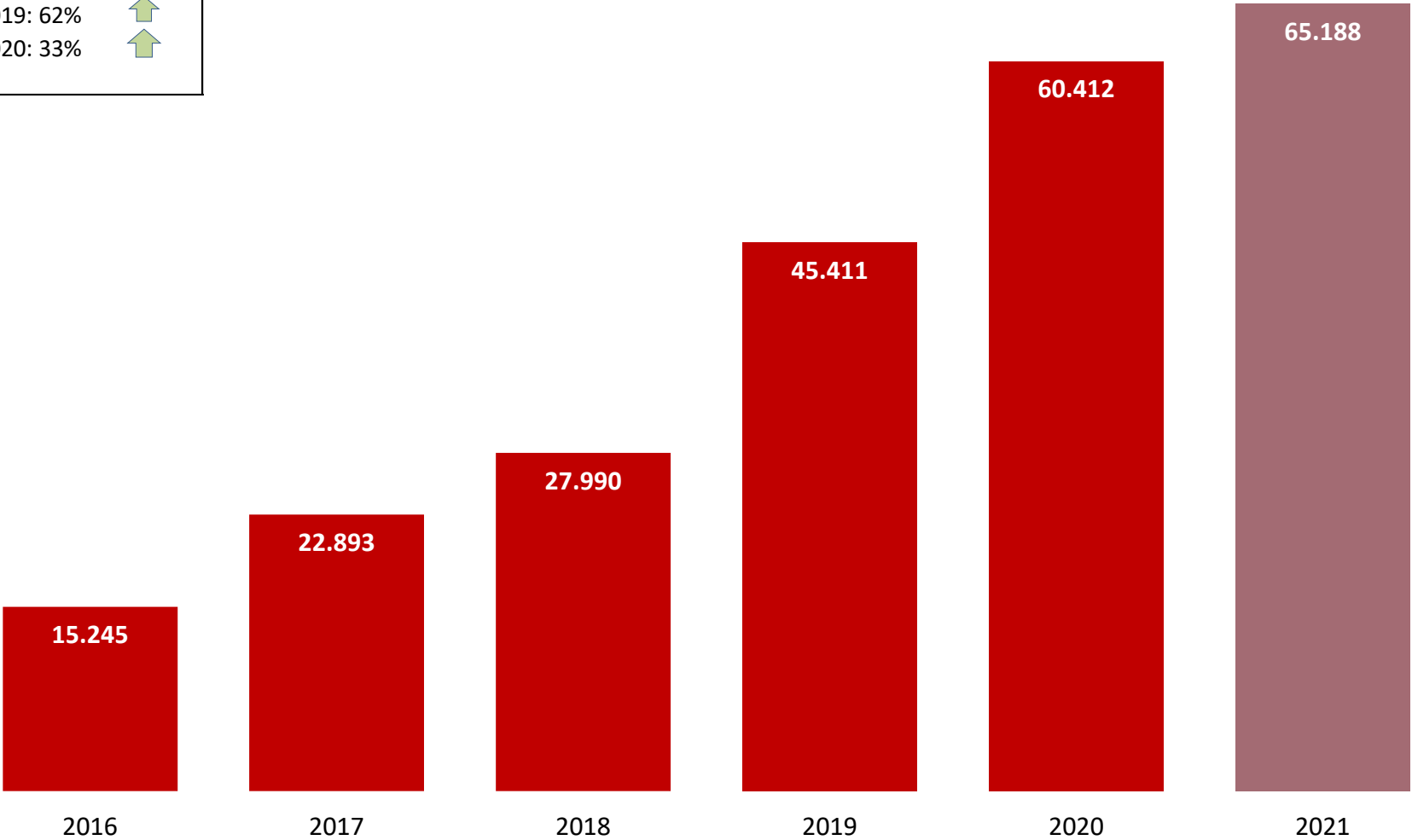
Udlån pr. år på eReolen Global



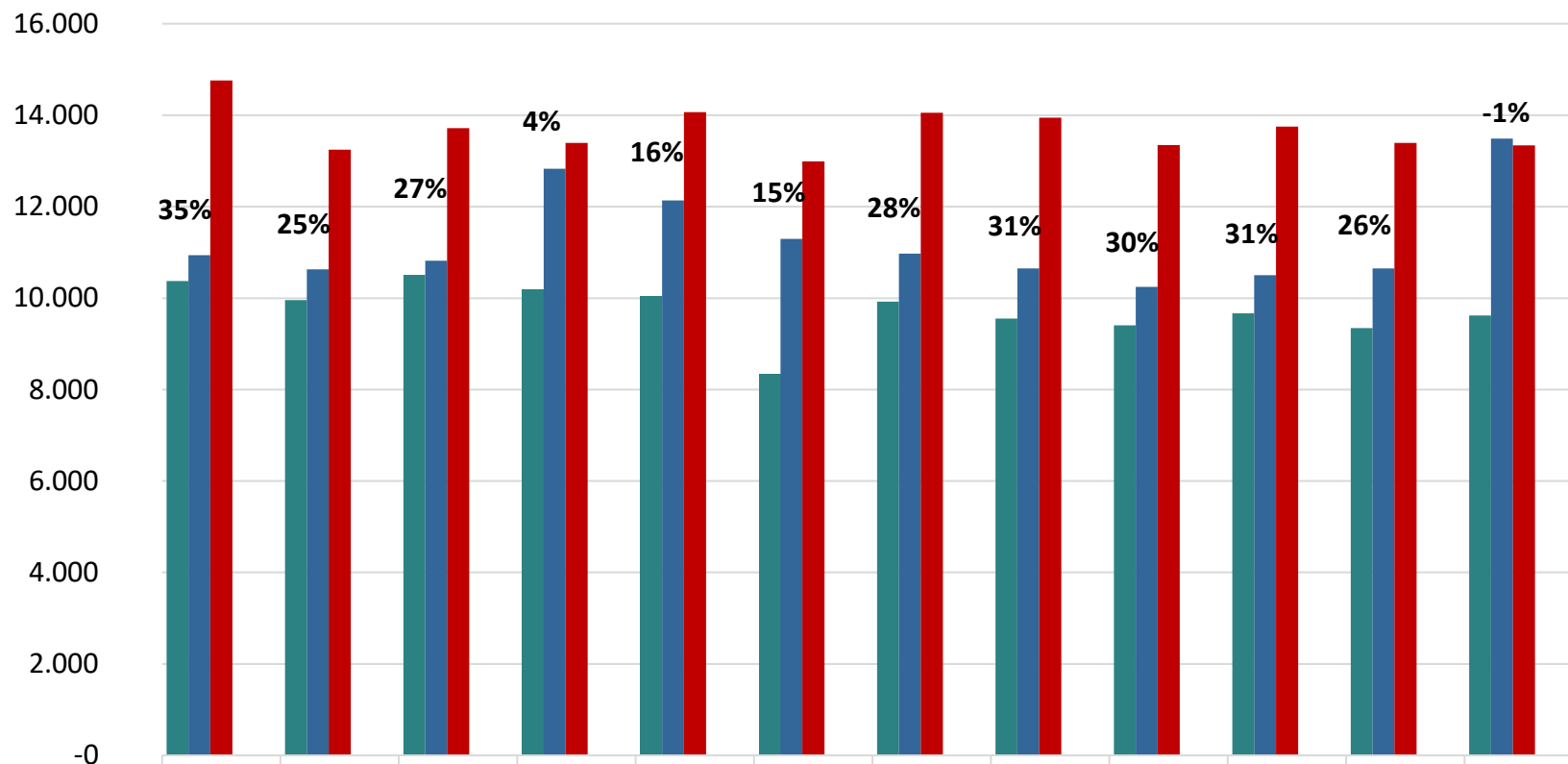
Unikke brugere pr. år eReolen Global

Ændring i % ifht LY:

2017: 50%	↑
2018: 22%	↑
2019: 62%	↑
2020: 33%	↑

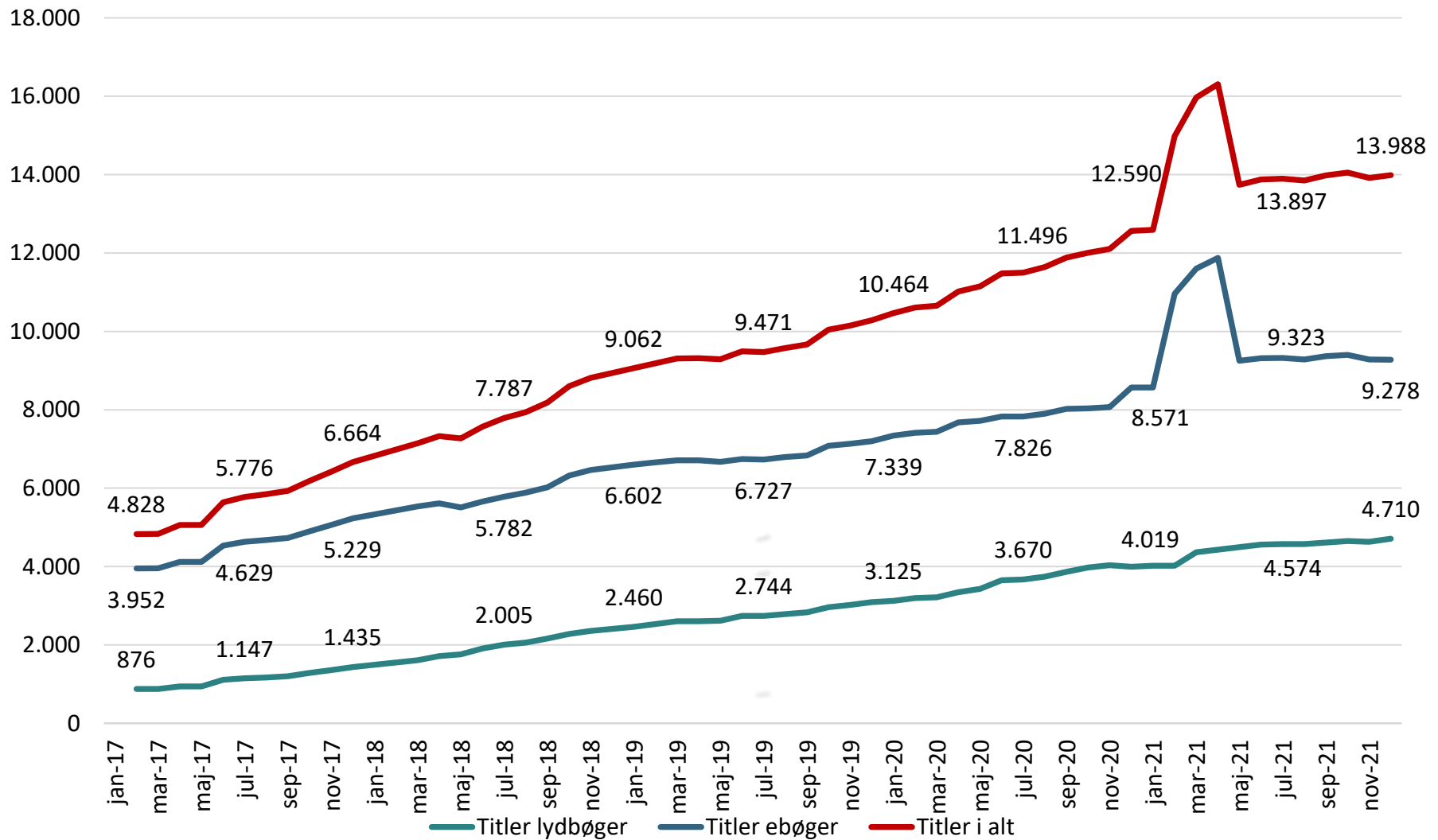


Unikke brugere vækst eReolen Global

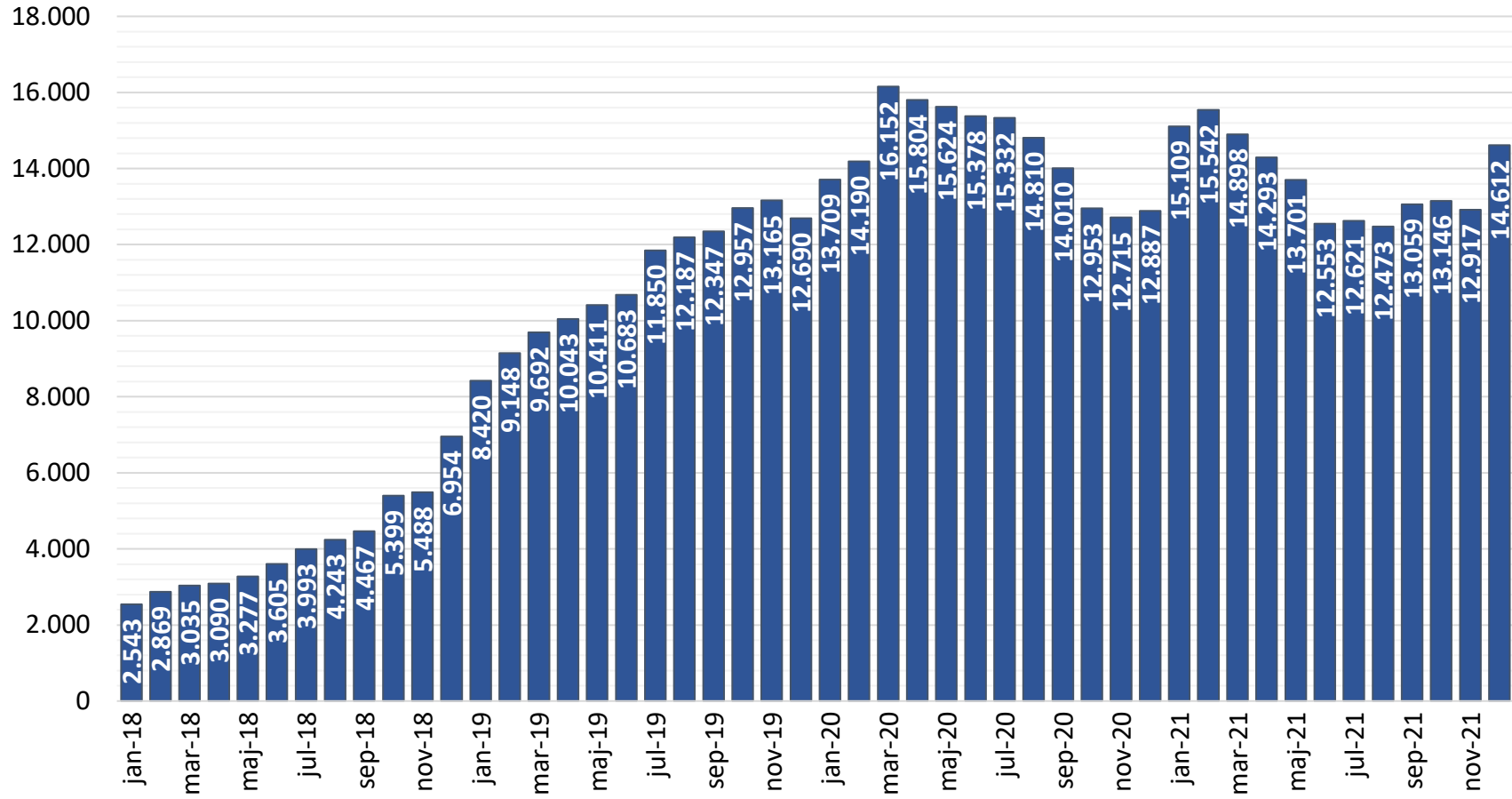


	jan	feb	mar	apr	maj	jun	jul	aug	sep	okt	nov	dec
2019	10.374	9.956	10.506	10.173	10.042	8.336	9.921	9.550	9.402	9.668	9.346	9.618
2020	10.936	10.627	10.817	12.827	12.139	11.294	10.974	10.652	10.244	10.504	10.648	13.487
2021	14.758	13.248	13.719	13.396	14.065	12.988	14.050	13.945	13.346	13.752	13.391	13.343
Vækst % 19/20	5%	7%	3%	26%	21%	35%	11%	12%	9%	9%	14%	40%
Vækst % 20/21	35%	25%	27%	4%	16%	15%	28%	31%	30%	31%	26%	-1%

Titler - eReolen Global



Reservationer pr. md. - eReolen Global



eReolen Global: Andel af udlån og titler fordelt på kategori

